

# CARACTERÍSTICAS TÉCNICAS | Technical Characteristics

MATERIAL  
ACABAMENTO Aço  
**Metalizado e Pintado**  
(Cores Corten ou Antracite, texturados)

COLOCAÇÃO  
PESO APROX. C/ Fixação ao solo  
Aprox. 5 Kg

MATERIAL  
FINISH Steel  
**Metallized and painted steel**  
(Corten/Anthracite textured colors)

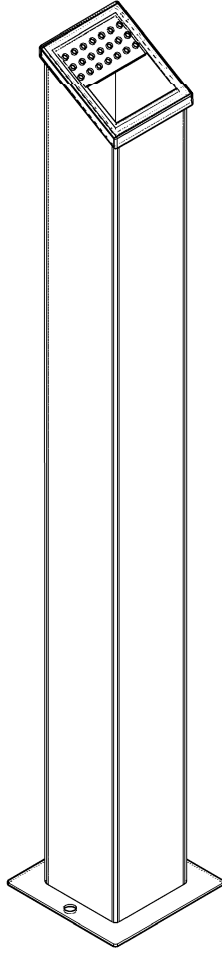
FIXING  
WEIGHT Set to Base  
Approx. 5 Kg



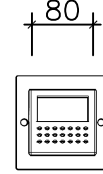
DESIGN Dep. Técnico AMOP

Dimensões (mm)

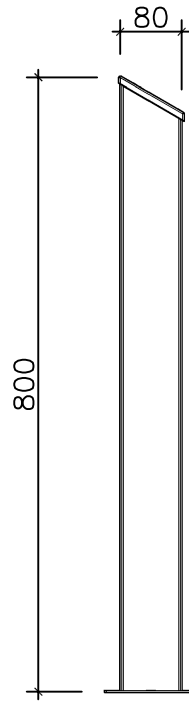
## DESENHO TÉCNICO | Technical Drawing



MODELAÇÃO  
Modeling

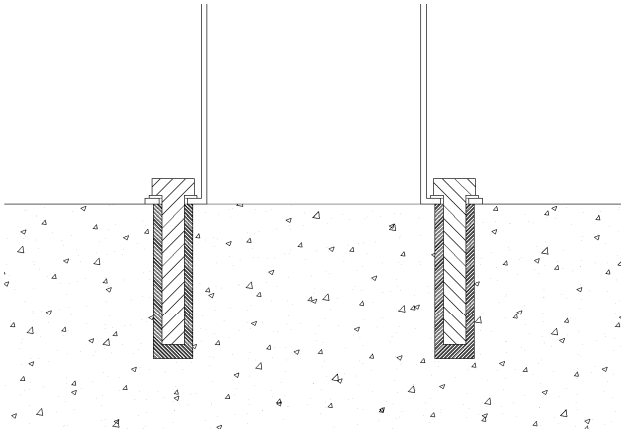


PLANTA  
Top View



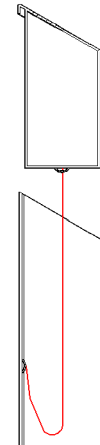
ALÇADO FRONTAL  
Front View

## APLICAÇÃO | Installation



APLICAÇÃO COM 2 BUCHA METALICA M8 (INCLUIDO)  
INSTALLATION WITH 2 M8 MECHANIC ANCHORS (INCLUDED)

## UTILIZAÇÃO | Usage



CABO DE AÇO SOLDADO AO CORPO  
STEEL CABLE, WELDED TO THE MAIN STRUCTURE

AMP.019/00 EDIÇÃO 0 DATA: 20-05-2011



APARTADO 38 3754-906 AGUADA DE BAIXO ÁGUEDA - PORTUGAL  
TEL 234667957 FAX 234666908  
ecn2@grupoamop.com www.ecn2.eu

**CINZEIRO**

REF.<sup>a</sup> - 13011

FT.13011.V1 Folha | Page 1-1